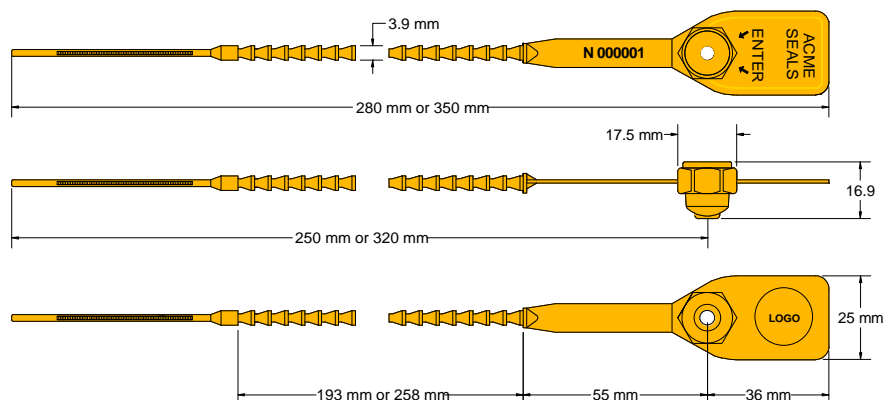




## GRIPTIGHT SEAL Data Sheet

Acme Design RegNo. 0622089  
Design Reg No. 2034534



The Acme **Griptight Seal** is a heavy duty pull-tight seal manufactured from two dissimilar materials. The acetyl insert is durable and will withstand freezing and boiling conditions, whilst the nylon body is flexible for easy use. The design features rolled heat staking technology to secure the insert to the body, which provides clear evidence of tampering if forced open or cut. This seal is suitable for most applications where strength is a requirement.

### Technical Data

#### Recommended Applications

Airlines, Cargo, Trailers, Tankers, Rail freight,  
Refineries, Containers, Postbags, Lockers, Banks,  
Cash in Transit.

#### Material

Body - Nylon 66  
Insert - Acetyl

#### Available Operating Lengths

(L1) 25cm (overall 28cm)  
(L2) 32cm (overall 35cm)

#### Ribbon Diameter

3.9mm

#### Tag Marking Dimensions

36mm x 25mm

#### Average Breaking Strength

39kg

#### Marking

Laser or Foil marking  
Consecutively numbered as standard  
Optional Customer name/logo  
Optional Laser Bar-coding on white foil patch

#### Colours

Foiled marked: Red, Blue, Green Yellow, Black, White  
Laser marked: Yellow & White  
Other colours may be available on request

#### Packaging

Standard Packaging : 5 per mat and 1,000 seals/carton  
Carton Dimensions : (L1) - 44.5cm x 44.5cm x 25cm  
: (L2) - 44.5cm x 44.5cm x 25cm  
Carton weight : (L1) - 6.71kg/carton  
: (L2) - 7.35kg/carton