

CRALUSEAL 100 – 110 – 120 - 130



DESCRIPTION :

- °The Craluseal is a secure and extremely economical seal.
- °Once the seal's flag has been pressed around the wire with pliers, it's impossible to reopen the seal again without destroying it.
- °Completely aluminium security seal numbered in sequence.
- ° Supports the following types of sealing wires:
 - Galvanised
 - Copper
 - Brass
 - Nylon-copper

STANDARD AVAILABLE COLOURS:

- °natural aluminium
- °golden aluminium (galvanized)
- °green aluminium (galvanized)
- °blue aluminium (galvanized)

SEQUENTIAL NUMBERING AND CUSTOMISATION:

- ° Sequenced numbering up to 6 digits
- °Customising with up to 12 characters and authentic reproduction of company logo

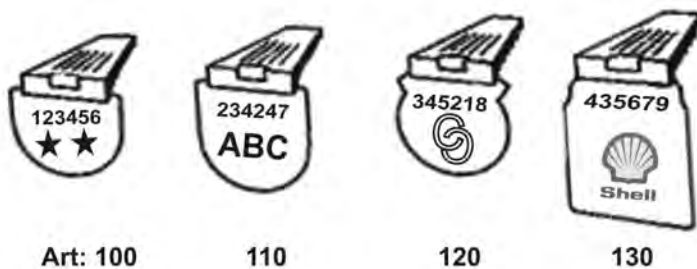
MATERIAL:

- °Plated Aluminium

OTHER PRODUCT SIZES WITH THE SAME CHARACTERISTICS

- ° CRALUSEAL 100 (natural aluminium or coloured)
 - ° CRALUSEAL 110 (natural aluminium or coloured)
 - ° CRALUSEAL 120 (natural aluminium or coloured)
 - ° CRALUSEAL 130 (natural aluminium or coloured)
- (All the above products must be used with our CRALUPLIER)

- ° CRIMPSEAL ((natural aluminium or coloured)
- ° PLOMBEX
- ° LEAD SEALS
- °TWISTSEAL
- °ANCHORCLICK



Art: 100

110

120

130

PACKING:



SECURITY SEALS FOR ALL INDUSTRIES AND TRANSPORTS – TAMPERING PREVENTION SYSTEMS