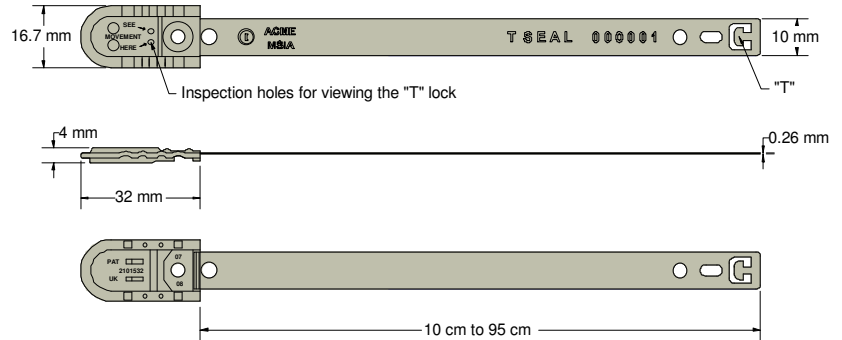




## T SEAL Data Sheet



The Acme **T Seal** is a fixed length metal seal manufactured in Tin plated steel. The design features a unique double locking action and inspection holes in the lock box which enable the user and security personnel to view the tips of the “**T**” mechanism within the lock box ensuring the seal has been correctly locked and has not been pre-tampered. This seal cannot be disengaged by intrusion or manipulation, nor can it be dismantled or cut without leaving obvious traces. It can be manufactured in operating lengths of between 10cm to 95cm and is suitable for use in temperatures of -60°C to 320°C (-76°F to 608°F).

### Technical Data

#### Recommended Applications

Trailers, Tankers, Containers, Rail freight, Refineries,  
Cash bags, Postbags, Lockers.

#### Material

Matt Tinplated Steel

#### Available Operating Lengths

10cm - 95cm (18cm is the standard length)

#### Strip Width

10mm

#### Marking Dimensions

10mm x 85mm

#### Average Breaking Strength

70kg

#### Acceptance

HM Revenue & Customs Sub-Group 3  
EU Regulation 2454/93, Article 386, Annex 46A  
US In-Bond Security

#### Marking

Embossed 7 digit consecutive numbers as standard  
Embossed traceability prefix as standard  
Optional embossed customer prefix/logo

#### Colours

Matt tinplated as standard but the T seal can be colour coded using the encapsulated T seal cover.

#### Packaging (18cm standard length seal)

Standard Packaging : 25 seals per pack and 1,000 seals/carton  
Carton Dimensions : 33cm x 25.4cm x 12cm  
Carton weight : 6.5kg/carton  
Packaging details for other lengths are available on request.